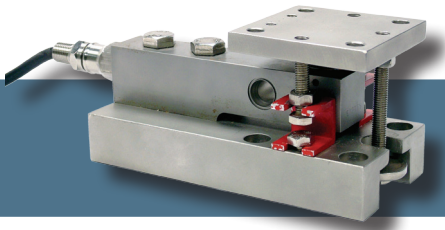


ADVANTAGE LINE - MEDIUM CAPACITY



HI HLPS Hermetic Load Point Assembly Compression

The Hardy HI HLPS ADVANTAGE® Series, sliding load point system is designed for use on medium to high capacity vessels.

Each load point consists of mounting hardware and a stainless steel mV/V and mV/V/ohm matched load sensor with true hermetic sealing, C2® Electronic Calibration capabilities, on-board electronic certs, a ¼ NPT conduit adapter and twenty feet of cable. Each pre-assembled, low profile load point system provides lift off protection and consists of three mount types specifically designed to eliminate the effects of unwanted forces to provide exceptional accuracy. The assembly can be positioned 360 degrees in ninety degree steps. A grounding strap and fixed color code wiring label is provided with each load point. The mounting hardware is available in either stainless or zinc plated steel. The sensors have an IP rating of IP68/IP69K and are NTEP Class III.

The HI HLPS is available in the following standard capacities: 1,125 lbs, 2.25K lbs, 4.5K lbs, 11.25K lbs, 22.5K lbs and are fully assembled with shipping bracket for protection.

SPECIFICATIONS

Rated Output (ES)	2±0.002mV/V
Non-Linearity	<±0.018 % R.O.
Hysteresis	<±0.025 % R.O.
Zero Balance	<±1.0 % R.O.
Creep @ 5 Min.	<±0.010 % R.O.
Temp Effect Output	<±0.0012 % R.O./C
Temp Effect Sensitivity	<±0.0010 % R.O./C
Input Resistance	1106 ± 5 ohm
Output Resistance	1000 ± 1 ohm
Insulation Resistance	>5000 Mohm
Excitation	5 - 15 vdc
Safe Load Limit	200 % Emax
Ultimate Load	300 % Emax
Safe Side Load LC	100 % Emax
Safe Side Load LP	50 % Emax
Max Lift Off	6.6 Klbs (1.125K to 4.5K cap) 10.4 Klbs (11.25K Cap) 15.2 Klbs (22.5K Cap)
Warranty	Two years

ORDERING INFORMATION

Load Point with Stainless Hardware (-43_) shown, zinc plated Hardware (-45_) Shipping Weight approx.12-57 lbs. for Load Point, 4-60 lbs. for a Sensor.

A vessel with 3 legs will require 1 each fixed (F), bumper (B) & slider (S) assy.

A vessel with 4 legs will require 1 each fixed (F), bumper (B) & 2 each slider (S) assy.

Capacity		Model #	Assy #			Model#
lbs	mt		FIXED	BUMPER	SLIDER	SPARE Load Sensor
1,125	0.5	HI HLPS1125-43__	F	B	S	HI SBH04-1125
2.25K	1	HI HLPS2.25K-43__	F	B	S	HI SBH04-2.25K
4.5K	2	HI HLPS4.5K-43__	F	B	S	HI SBH04-4.5K
11.25K	5	HI HLPS11.25K-43__	F	B	S	HI SBH04-11.25K
22.5K	10	HI HLPS22.5K-43__	F	B	S	HI SBH04-22.5K

Load points can be ordered as a system rather than ordering individual components.

3 POINT SYSTEMS

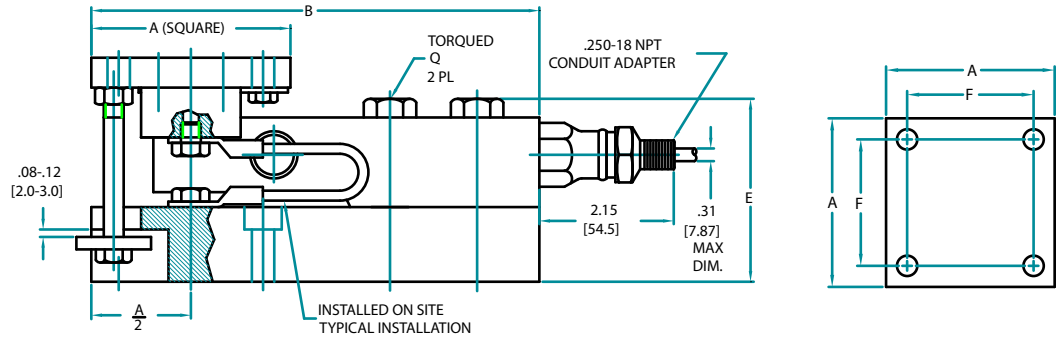
CAPACITY		MODEL#
lbs	mt	
3,375	1.5	HI 3S3375-43
6.75K	3.1	HI 3S6.75K-43
13.5K	6.1	HI 3S13.5K-43
33.75K	15.3	HI 3S33.75K-43
67.5K	30.6	HI 3S67.5K-43

4 POINT SYSTEMS

CAPACITY		MODEL#
lbs	mt	
4.5K	2.0	HI 4S4.5K-43
9K	4.1	HI 4S9K-43
18K	8.2	HI 4S18K-43
45K	20.4	HI 4S45K-43
90K	40.8	HI 4S90K-43

ADVANTAGE Load Point Outline

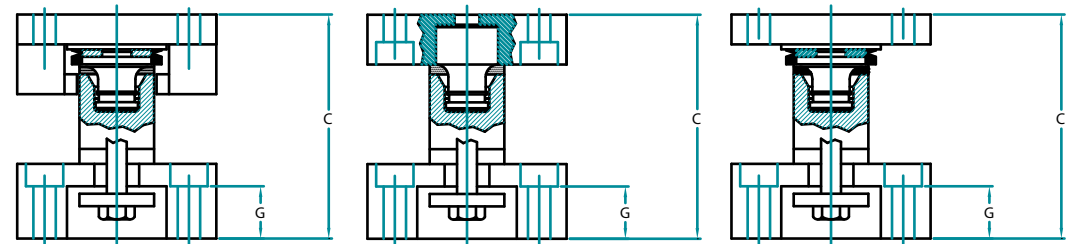
HI HLPS Series



C2 WIRE COLOR CODE FLAG LABEL IS FOUND APPROX. 10 IN. FROM END OF SENSOR'S CABLE

EXCITATION +	RED
EXCITATION -	BLACK
SIGNAL +	GREEN
SIGNAL -	WHITE
C2 +	GRAY
C2 -	VIOLET
SHIELD	YELLOW

WARNING: NEVER cut load sensor cable



2-Directional Bumper Module (B) Fixed Loading Pin Module (F) Free Sliding Module (B)

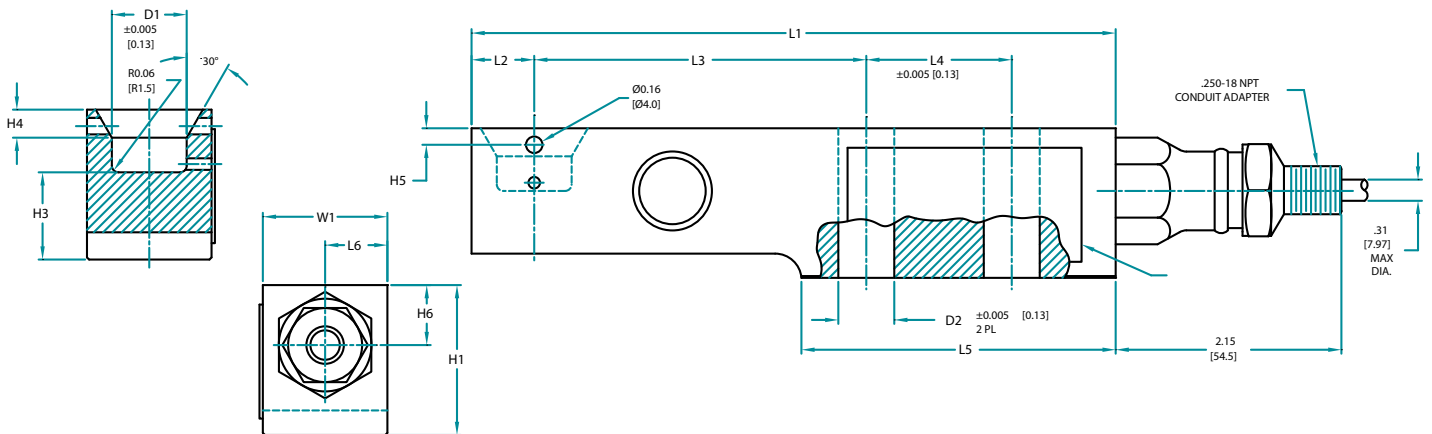
CABLE LENGTH 20 FEET

DIMENSIONS- INCHES & [mm]

CAPACITY LBS [kN]	A	B	C	ØD	E	F	G	H	J	K	L	ØM	Q FT LBS	MOUNT SCREW	WEIGHT LBS
1.125K, [5] 2.25K, [10] 4.5K [20]	3.15 [80.0]	7.09 [180.0]	3.54 [90.0]	0.354 [9.00]	2.91 [74.0]	2.28 [58.0]	0.83 [21.0]	0.47 [12.0]	0.43 [11.0]	0.79 [20.0]	1.18 [30.0]	0.591 [15.00]	65 [70Nm]	.312	12
11.25K [50]	3.94 [100.0]	8.66 [220.0]	4.72 [120.0]	0.433 [11.00]	4.02 [102.0]	2.99 [76.0]	0.98 [25.0]	1.14 [29.0]	0.59 [15.0]	0.98 [25.0]	1.57 [40.0]	0.709 [18.00]	295 [400Nm]	.375	24
22.5K [100]	4.72 [120.0]	10.83 [275.0]	6.69 [170.0]	0.571 [14.50]	5.83 [148.0]	3.54 [90.0]	1.85 [47.0]	0.79 [20.0]	0.67 [17.0]	1.18 [30.0]	2.36 [60.0]	0.866 [22.00]	515 [700Nm]	.500	56.2

ADVANTAGE Load Sensor Outline

HI SBH04 Series



DIMENSIONS- INCHES & [mm]

TOLERANCES: ±0.010 [0.25] UNLESS OTHERWISE STATED

CAPACITY LBS [kN]	L1	L2	L3	L4	L5	L6	H1	H2	H3	H4	H5	H6	W1	ØD1	ØD2	BOLT	TORQUE
1.125K [5] 2.25K [10] 4.5K [20]	6.10 [155.0]	0.59 [15.0]	3.15 [80.0]	1.38 [35.0]	2.98 [75.7]	0.59 [15.0]	1.42 [36.0]	0.23 [5.8]	0.83 [21.0]	0.27 [6.9]	0.16 [4.1]	0.59 [15.0]	1.181±0.003 [30.0±0.08]	0.709 [18.0]	0.53 [13.5]	.500-20 UNC GRADE 5 [M12 8.8]	65 FT LBS [90Nm]
11.25K [50]	7.48 [190.0]	0.83 [21.0]	4.13 [105.0]	1.57 [39.9]	3.66 [93.0]	0.66 [16.8]	1.93 [49.0]	0.31 [7.9]	1.12 [28.5]	0.23 [5.8]	0.31 [7.9]	0.89 [22.5]	1.693±0.003 [43.0±0.08]	0.984 [25.0]	0.85 [21.5]	.750-10 UNC GRADE 5 [M20 8.8]	295 FT LBS [400Nm]
22.5K [100]	9.65 [245.0]	1.19 [30.2]	5.31 [134.9]	1.97 [50.0]	4.72 [120.0]	0.73 [18.5]	2.87 [73.0]	0.50 [12.7]	1.66 [42.2]	0.39 [10.0]	N/A	1.22 [31.0]	2.362±0.005 [60.0±0.13]	1.181 [30.0]	1.06 [27.0]	1.000-8 UNC GRADE 5 [M24 8.8]	515 FT LBS [700Nm]

800.821.5831

+1 858.278.2900